

SC-6™ Reversible Striping Tips (665-xxxx)

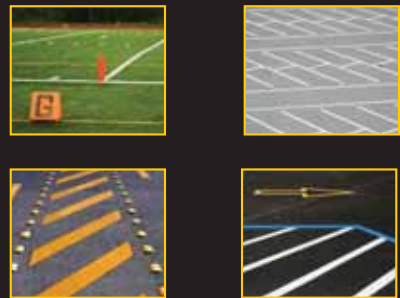
MEASURE	LINE WIDTH							
	25 - 51	51 - 102	102 - 152	152 - 203	255 - 305	305 - 357	357 - 406	
mm	25 - 51	51 - 102	102 - 152	152 - 203	255 - 305	305 - 357	357 - 406	
Inches	1 - 2	2 - 4	4 - 6	6 - 8	10 - 12	12 - 14	14 - 16	
ORIFICE SIZE	RECOMMENDED TIP							
.33 mm .013"	1302	1304	1308					
.38 mm .015"	1502	1504	1508	1512				
.43 mm .017"	1702	1704	1708	1712				
.48 mm .019"	1902	1904	1908	1912	1920			
.53 mm .021"		2104	2108	2112		2124	2128	
.58 mm .023"			2308	2312		2324	2328	
.64 mm .025"			2508	2512				
.69 mm .027"			2708	2712				
.74 mm .029"			2908	2912				
.79 mm .031"			3108	3112				
.89 mm .035"			3508	3512				
.99 mm .039"			3908	3912				
1.09 mm .043"			4308	4312				

	Stencils & Athletic Courts, Light Film, Use 100 mesh filter
	Stencils & Athletic Courts, Light Film
	Stencils & Athletic Courts, Alkyd Only, Heavy Film
	Most Traffic Paints, Heavy Film
	Most Traffic Paints, Medium Film
	Most Traffic Paints, Light Film
	Most Traffic Paints, High Speed, Heavy Film
	Most Traffic Paints, High Speed, Medium Film
	Most Traffic Paints, High Speed, Light Film
	All Traffic Paints, High Speed, Heavy Film



SC-6™ Reversible Striping Tips

- Features Titan's proprietary "Extended Life" tungsten carbide.
- Proven to outlast competitive tips by 20%.
- Designed to deliver even mil thickness throughout the spray pattern.
- Creates crisp clean edges for cleaner, more distinct lines that last longer.



Imported by:

Distributed by:

International Sales

Titan Tool, Inc.
 107 Bauer Drive
 Oakland, NJ 07436
 Tel: +201 337 1240
 Fax: +201 405 7449
 Website: www.titantool.com/international

Ask for Genuine Titan/Speedflo Parts and Accessories



© Copyright 2007 Titan Tool, Inc. Titan and Speedflo are registered trademarks and PowrLiner, PowrDrive, PowrHandler, HydraDrive, ExL DC Motor, ConvertoKit, SC-6 Tip, SureTrak, WideTrak and Severe Service 900 are trademarks of Titan Tool, Inc. JB50351 SL 40002 / 02-2007

Airless Mechanical and Hydraulic Piston Line Stripers



PowrLiner™ Series



**The Industry's Toughest,
 Most Reliable Line Stripers**






Global Leader in Paint
 Spray Technology

PowrLiner™ MECHANICAL PISTON LINE STRIPERS



For Your Toughest Striping Applications!

PowrLiner 800	
PowrLiner 2800	
PowrLiner 3800	

Coming in 2007

Mechanical Piston Features



- Exclusive fluid section design requires no cylinder.
- Patented, modular pump housing design makes routine service quick and easy.
- One-piece, self-adjusting packings with wiper lip last up to 50% longer than nearest competitor.
- Heavy duty self-aligning clutch.
- State-of-the-art pressure control on PowrLiner 2800 and PowrLiner 3800 models.
- Stainless steel rotating ball valves keep debris from sticking to minimize downtime and maximize performance.
- Access and clean ball valves without damaging packings or removing pump section.
- Reversible inlet and outlet seats last twice as long as standard seats.
- Adjustable gun bar mounts on either side of the PowrLiner 2800 and PowrLiner 3800 with quick gun release for trouble-free stenciling.

**PowrLiner 3800
FLUID SECTION**

These world-class line strippers use state-of-the-art mechanical piston technology for consistent, dependable line striping performance and economical operation >



PowrLiner 800



Coming in 2007

PowrLiner 800 Features

- Simple, compact design weighs only 30 kg – easy to use, transport and store.
- Powered by a dependable, easy-starting Robin-Subaru® 4-cycle .81 kW OHV engine.
- Equipped with LX-40 spray gun with an in-handle filter and SC-6™ Reversible Striping Tip with 7.6 m long anti-static spray hose.
- Adjustable front tire can be locked at any angle.

PowrLiner 800 Specifications

Max. Output – Petrol Engine	1.3 lpm (.33 gpm)
Max. Operating Pressure	172 bar (2500 psi)
1-Gun Tip Size – Petrol Engine	.48 mm (.019")

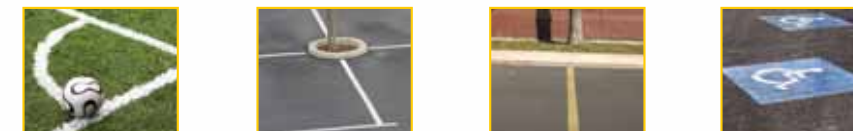
Optional Accessory

Laser Pointer

759-140



Recommended for Light and Intermittent Duty on Small Parking Lots and Athletic Fields >



PowrLiner™ 2800 / 3800 MECHANICAL PISTON LINE STRIPERS



Reliable Piston Performance!

PowrLiner 2800



PowrLiner 2800 Features

- Heavy duty tubular frame has epoxy finish that resists harsh solvents and corrosion.
- Unit weighs only 80 kg and fits easily in most vans and pick-up trucks.
- Powered by a Honda® 3 kW OHV engine with Low-Oil Alert.
- Exclusive fluid section design requires no cylinder.
- Computerized pressure control ensures exceptional line quality and more productivity – 13% more output than competitive sprayers.
- Equipped with LX-80™ spray gun and SC-6™ Reversible Striping Tip with 15 m long anti-static hose.
- Large hose storage rack stores up to 90 m of hose.
- Locking front swivel caster tracks straight and unlocks for easy maneuvering.

PowrLiner 2800 Specifications

Max. Output – Petrol Engine	2.8 lpm (.75 gpm)
Max. Operating Pressure	228 bar (3300 psi)

1-Gun Tip Size – Petrol Engine .66 mm (.026")

Optional Accessory Laser Pointer

759-140



PowrLiner 3800



One-gun model shown

PowrLiner 3800 Specifications

Max. Output – Petrol Engine	4.9 lpm (1.30 gpm)
Max. Operating Pressure	228 bar (3300 psi)

1-Gun Tip Size – Petrol Engine .89 mm (.035")
2-Gun Tip Size – Petrol Engine .64 mm (.025")

PowrLiner 3800 Features

- Powered by a dependable, easy-starting Robin-Subaru® 4.5 kW OHC engine.
- Exclusive fluid section design requires no cylinder.
- Electronic pressure control ensures exceptional line quality and more productivity.
- WideTrak™ precision front caster system tracks straight and unlocks for easy maneuvering.
- Engine control box on handle bar for easy adjustment of throttle and shutdown of the engine.
- 3-height adjustment handlebar for operator comfort.
- Rear-wheel brake prevents movement on hills and during transport.
- Equipped with LX-80™ spray gun and SC-6™ Reversible Striping Tip with 15 m long anti-static hose.
- Large hose storage rack stores up to 90 m of hose.

Optional Accessories Glass Bead Dispensing Systems

See Chart – Series Specifications Section.



Laser Pointer

759-140



Recommended for Medium-Duty on Parking Lots and Athletic Fields >



Recommended for Heavy, Full-Time Duty on Parking Lots and Athletic Fields >



PowrLiner™ XLT HYDRAULIC PISTON LINE STRIPERS



Xtended Life Technology

For Your Toughest Striping Applications!

PowrLiner 4900_{XLT}	
PowrLiner 6900_{XLT}	
PowrLiner 8900_{XLT}	
PowrLiner 9900_{XLT}	

These high-performance, heavy duty line stripers use long-stroke, slow-cycling hydraulic piston technology for dependable, long-term line spraying and economical operation >

Speeflo® Hydraulics

Less Downtime Equals More Profit!



HydraDrive™

- Reliable, smooth, slow-stroking hydraulic drive greatly extends the operational life of the sprayer.
- External-hydraulic fluid porting with new, upgraded fittings allows for quick troubleshooting and easy maintenance.
- SAE O-Ring fitting and precision rod alignment ensure maximum pump life.

Severe Service 900™ Pump

- Cylinder and piston rod are tempered with a proprietary heat-treating process that increases pump life 150% longer than competitive pumps.
- Self-adjusting packings resist over-tightening, helping to prevent premature wear.
- Foot valve removes easily for faster cleaning and easy maintenance.
- Reversible inlet and outlet seats have twice the lifespan of ordinary outlet seats. Extra large ball valves ensure efficient pump operation and longer unit life.
- Heavy duty prime/spray valve ensures consistent increased flow and faster pump priming.

PowrLiner 4900_{XLT}



Two-gun model shown

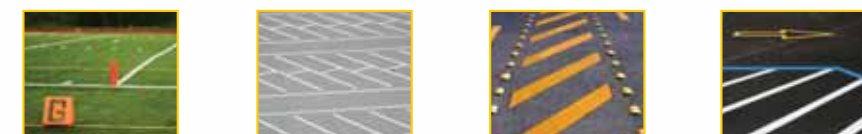
PowrLiner 4900 Specifications

Max. Output – Petrol Engine	5.7 lpm (1.25 gpm)
Max. Output – Electric Motor	5.0 lpm (1.10 gpm)
Max. Operating Pressure	228 bar (3300 psi)
1-Gun Tip Size – Petrol Engine	.91 mm (.035")
2-Gun Tip Size – Petrol Engine	.71 mm (.028")

PowrLiner 4900_{XLT} Features

- Heavy duty, epoxy finished frame resists harsh solvents and corrosion.
- Powered by a Honda® 3 kW OHV engine with Low-Oil Alert or a 1.5 kW Extended-Life DC Electrical Motor.
- Engine controls in easy reach of operator.
- Precise pressure up to 228 bar, for spraying light-bodied coatings all the way up to low-VOC striping paints.
- Equipped with S-3 spray gun and SC-6™ Reversible Striping Tip with 15 m long anti-static hose.
- Large hose storage rack stores up to 90 m of hose.
- Frame is designed to rig spray guns in pairs to easily and quickly paint double lines.
- Pneumatic tyres for smooth traction.
- WideTrak™ precision front caster system is a swivel caster that locks into straight or radius modes for accurate, precise lines.
- Convenient, on-board 45 L (12 gal) paint hopper.

Recommended for Large-Scale Projects on Roads, Parking Lots and Athletic Fields >



Optional Accessories

Glass Bead Dispensing Systems

See Chart – Series Specifications Section.

Laser Pointer

759-140



SureTrak™ Floating Gun Kit

759-120

Portable Headlight

759-145



PowrLiner™ 6900_{XLT} / 8900_{XLT} / 9900_{XLT} HYDRAULIC PISTON LINE STRIPERS



For Your Toughest Striping Applications!

PowrLiner 6900_{XLT} / 8900_{XLT}



Two-gun models shown

PowrLiner 6900_{XLT} / 8900_{XLT} Specifications

6900 _{XLT}	Max. Output	- Petrol Engine	9.8 lpm (2.15 gpm)
		- Electric Motor	5.7 lpm (1.25 gpm)
8900 _{XLT}	Max. Output	- Petrol Engine	10.7 lpm (2.35 gpm)
		- Electric Motor	5.7 lpm (1.25 gpm)
Max. Operating Pressure (6900 and 8900)			228 bar (3300 psi)
6900 _{XLT}	1-Gun Tip Size	- Petrol Engine	1.22 mm (.045")
	2-Gun Tip Size	- Petrol Engine	.84 mm (.033")
8900 _{XLT}	1-Gun Tip Size	- Petrol Engine	1.32 mm (.049")
	2-Gun Tip Size	- Petrol Engine	.97 mm (.038")

PowrLiner 6900_{XLT} / 8900_{XLT} Features

- Heavy duty, epoxy finished frame resists harsh solvents and corrosion.
- PowrLiner 6900 is powered by a Honda® 3 kW OHV engine; PowrLiner 8900 is powered by a Honda® 4 kW OHV engine, both with Low-Oil Alert. Both units are convertible to electric with a 1.5 kW Extended-Life DC Electrical Motor.
- Engine controls in easy reach of operator.
- Precise pressure control up to 228 bar, for spraying light-bodied coatings all the way up to low-VOC striping paints.
- Self-propelled units have Dana™ Transaxle Drive for precise, variable speed control at the press of a button.
- Equipped with S-3 spray gun and SC-6™ Reversible Striping Tip with 15 m long anti-static hose.
- Large hose storage rack stores up to 90 m of hose.
- Frame is designed to rig spray guns in pairs to easily and quickly paint double lines.
- Pneumatic tyres for smooth traction.
- WideTrak™ precision front caster system is a swivel caster that locks into straight or radius modes for accurate, precise lines.
- Convenient, on-board 45 L (12 gal) paint hopper.

PowrLiner 9900_{XLT}



Two-gun model shown with PowrHandler attached.

PowrLiner 9900_{XLT} Specifications

Max. Output- Petrol Engine	10.7 lpm (2.35 gpm)
Max. Operating Pressure	228 bar (3300 psi)
1-Gun Tip Size - Petrol Engine	1.32 mm (.049")
2-Gun Tip Size - Petrol Engine	.97 mm (.038")

PowrLiner 9900_{XLT} Features

- Heavy duty, epoxy finished frame resists harsh solvents and corrosion. A wheeled operator's seat can be hitched to rear of striper for greater comfort.
- Powered by a Honda® 6 kW OHV engine with Low-Oil Alert.
- Engine controls in easy reach of operator.
- Precise pressure up to 228 bar, for spraying light-bodied coatings all the way up to low-VOC striping paints.
- Unit is self-propelled with Dana™ Transaxle Drive for precise, variable speed control at the press of a button.
- Equipped with S-3 spray gun and SC-6™ Reversible Striping Tip with 15 m long anti-static hose.
- Large hose storage rack stores up to 90 m of hose.
- Pneumatic tyres for smooth traction.
- WideTrak™ precision front caster system is a swivel caster that locks into straight or radius modes for accurate, precise lines.
- Convenient, on-board 45 L (12 gal) paint hopper.

PowrHandler™

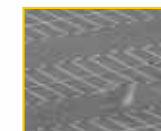
Wheeled Operator Seat with No-Skid Deck has room for additional paint pail or extra supplies. Available for PowrLiner 9900 only.



Recommended for Large-Scale Projects on Airports, Roads, Parking Lots and Athletic Fields >



Recommended for Very Large-Scale Projects on Airports, Roads, Parking Lots and Athletic Fields >



PowrLiner™ SERIES SPECIFICATIONS



For Your Toughest Striping Applications!



LX-40 Gun

- All-metal construction.
- In-handle filter.
- Tungsten carbide ball valve ensures long life.
- Includes 517 SC-6™ reversible tip.
- Pressure rated at 250 bar (3600 PSI).
- Product Number 550-540.



LX-80™ Gun

- All-metal construction.
- In-handle filter.
- Tungsten carbide ball valve ensures long life.
- High-pressure swivel.
- Includes 517 SC-6™ reversible tip.
- Pressure rated at 250 bar (3600 PSI).
- Product Number 581-085.



S-3 Gun

- All-metal construction.
- Stainless steel fluid passages.
- Tungsten carbide ball valve ensures long life.
- Easy 4-finger trigger pull.
- Includes 517 SC-6™ reversible tip.
- Pressure rated at 270 bar (3900 PSI).
- Product Number 550-250.

Specifications	Coming in 2007			
	Mechanical	PowrLiner 800	PowrLiner 2800	PowrLiner 3800
Model No. – 1-Gun – 2-Gun – 2-Gun (Self-Propelled)	759-091 — —	759-2011 — —	759-391 759-392 —	— — —
Max. Tip Size – Petrol – 1-Gun – 2-Gun	.48 mm (.019") —	.66 mm (.026") —	.89 mm (.035") .64 mm (.025")	— —
Max. Tip Size – Electric – 1-Gun 2-Gun	— —	— —	— —	— —
Max. Output – Petrol Max. Output – Electric	1.3 lpm (.33 gpm) —	2.8 lpm (.75 gpm) —	4.9 lpm (1.3 gpm) —	— —
Max. Spraying Speed*	32.3 m (106') per minute @ 1.9 kph (1.2 mph)	73.2 m (240 linear ft.) per minute @ 4.3 kph (2.7 mph)	126.8 m (416 linear ft.) per minute @ 7.6 kph (4.7 mph)	—
Line Width Range	5 cm - 30.5 cm (2" - 12")	5 cm - 30.5 cm (2" - 12")	5 cm - 61 cm (2" - 24")	—
Max. Operating Pressure	172 bar (2500 psi)	228 bar (3300 psi)	228 bar (3300 psi)	—
Max. Hose Length	15.2 m (50')	91.4 m (300')	91.4 m (300')	—
Power Source	.81 kW (1.1 hp) Robin-Subaru® Overhead Valve Engine	3 kW (4.0 hp) Honda® Overhead Valve Engine w/Low-Oil Alert	4.5 kW (6.0 hp) Robin-Subaru® OHC Engine w/Low-Oil Alert	—
Electric Motor	—	—	—	—
Pump Drive	Mechanical	Mechanical	Mechanical	—
Cycle Rate	—	—	—	—
Electrical System	—	—	—	—
Paint Outlet Filter – Element – Filter Area	60 mesh 19 cm² (3 in²)	60 mesh 90 cm² (14 in²)	60 mesh 90 cm² (14 in²)	—
Gun, Airless	550-540, LX40	581-085, LX80 [®]	581-085, LX80 [®]	—
Hose, Airless	316-513, 7.6 m (1/4" x 25')	316-505, 15.2m (1/4" x 50')	316-505, 15.2m (1/4" x 50')	—
Tips, Airless Striping, supplied per gun	1 ea., 665-1708, SC-6™ Striping Tip, 102 mm (4") Line by .43 mm (.017") orifice	1 ea., 665-1708, SC-6™ Striping Tip, 102 mm (4") Line by .43 mm (.017") orifice	1 ea., 665-1708, SC-6™ Striping Tip, 102 mm (4") Line by .43 mm (.017") orifice	—
Operator's Manual	313-2748	313-2296	313-2748	—
Repair Kit – Pump – Gun	759-310 580-034	755-165 580-034	759-268 580-034	—
Optional Electric Motor Kit	—	—	—	—
Weight – Unit – Unit Crated	30 kg (65 lbs) 34 kg (75 lbs)	80 kg (176 lbs) 111 kg (245 lbs)	123 kg (272 lbs) 156 kg (344 lbs)	—
Dimensions – Unit – Unit Crated	81 cm H x 53 cm W x 104 cm L 32" H x 21" W x 41" L	104 cm H x 79 cm W x 152 cm L 41" H x 31" W x 60" L	104 cm H x 79 cm W x 152 cm L 41" H x 31" W x 60" L	—
Coatings Compatibility	Most advanced, low-VOC, waterborne traffic paints	Most advanced, low-VOC, waterborne traffic paints	Most heavy, low-VOC, waterborne, rubberized and alkyd traffic paints	—
Common Applications	Light-duty striping use on small parking lots and athletic fields	Medium-duty use on parking lots and athletic fields	Heavy, continuous use on roads, intersections, parking lots and athletic fields	—

*Based on 10 cm (4") line @ 15 mil wet film thickness and 98 m (320') per liter (gallon) coverage.
All information contained in this brochure is based on the latest information available at the time of printing. Titan reserves the right to make changes at any time without notice.

Glass Bead Dispensing Systems



- Apply reflective glass beads onto traffic paint.
- All-welded aluminum dispensing head.
- Corrosion-resistant hopper holds 22.7 kg (50 lbs) of beads.
- Simple gravity flow system needs no power.
- Dispensers available in 102 mm (4"), 152 mm (6") and 305 mm (12") widths.
- Simple installation – takes only 30 minutes.
- Quick disconnect dispenser linkage.

Hydraulic

PowrLiner 4900 _{XLT}	PowrLiner 6900 _{XLT}	PowrLiner 8900 _{XLT}	PowrLiner 9900 _{XLT}
759-491 759-493	759-691 759-693 759-698	759-891 759-893 759-899	— 759-990
.91 mm (.035") .71 mm (.028") .79 mm (.031") .58 mm (.023")	1.22 mm (.045") .84 mm (.033") .91 mm (.036") .66 mm (.026")	1.32 mm (.049") .97 mm (.038") .91 mm (.036") .66 mm (.026")	1.32 mm (.049") .97 mm (.038") — —
5.7 lpm (1.25 gpm) 5.0 lpm (1.10 gpm)	9.8 lpm (2.15 gpm) 5.7 lpm (1.25 gpm)	10.7 lpm (2.35 gpm) 5.7 lpm (1.25 gpm)	10.7 lpm (2.35 gpm) —
122 m (400') per minute @ 7.6 kph (4.7 mph)	210 m (688') per minute @ 12.6 kph (7.8 mph)	229 m (752') per minute @ 13.7 kph (8.5 mph)	229 m (752') per minute @ 13.7 kph (8.5 mph)
5 cm - 61 cm (2" - 24")	5 cm - 61 cm (2" - 24")	5 cm - 61 cm (2" - 24")	5 cm - 61 cm (2" - 24")
228 bar (3300 psi)	228 bar (3300 psi)	228 bar (3300 psi)	228 bar (3300 psi)
91.4 m (300')	91.4 m (300')	91.4 m (300')	91.4 m (300')
3 kW (4.0 hp) Honda® Overhead Valve Engine w/Low-Oil Alert 1.5 kW (2 hp) Extended Life DC	4 kW (5.5 hp) Honda® Overhead Valve Engine w/Low-Oil Alert 1.5 kW (2 hp) Extended Life DC	4 kW (5.5 hp) Honda® Overhead Valve Engine w/Low-Oil Alert 1.5 kW (2 hp) Extended Life DC	6 kW (8.0 hp) Honda® Overhead Valve Engine w/Low-Oil Alert —
Hydraulic	Hydraulic	Hydraulic	Hydraulic
23 per liter (87 per gallon)	15 per liter (55 per gallon)	11 per liter (40 per gallon)	10.6 per liter (38.6 per gallon)
50 W - 12 V DC	50 W - 12 V DC	50 W - 12 V DC	50 W - 12 V DC
50 mesh 116 cm² (18 in²)	50 mesh 116 cm² (18 in²)	50 mesh 116 cm² (18 in²)	50 mesh 116 cm² (18 in²)
550-250, S-3	550-250, S-3	550-250, S-3	550-250, S-3
316-505, 15.2 m (1/4" x 50')	316-505, 15.2 m (1/4" x 50')	316-505, 15.2 m (1/4" x 50')	316-505, 15.2 m (1/4" x 50')
1 ea., 665-1908, SC-6™ Striping Tip, 102 mm (4") Line by .43 mm (.017") orifice	1 ea., 665-1908, SC-6™ Striping Tip, 102 mm (4") Line by .43 mm (.017") orifice	1 ea., 665-1908, SC-6™ Striping Tip, 102 mm (4") Line by .43 mm (.017") orifice	1 ea., 665-1908, SC-6™ Striping Tip, 102 mm (4") Line by .43 mm (.017") orifice
313-2593	313-2596	313-2582	313-2545
107-051	144-050	144-050	144-050
520-275	520-275	520-275	520-275
506-217	506-211	506-276	—
107 kg (235 lbs) 167 kg (370 lbs)	111 kg (245 lbs) 172 kg (380 lbs)	117 kg (255 lbs) 175 kg (385 lbs)	169 kg (372 lbs) / PowrHandler 67 kg (147 lbs) 195 kg (429 lbs) / PowrHandler 76 kg (167 lbs)
104 cm H x 79 cm W x 152 cm L 41" H x 31" W x 60" L	104 cm H x 79 cm W x 152 cm L 41" H x 31" W x 60" L	104 cm H x 79 cm W x 152 cm L 41" H x 31" W x 60" L	104 cm H x 79 cm W x 152 cm L / PowrHandler 94 cm H x 71 cm W x 102 cm L (41" H x 31" W x 60" L) / PowrHandler (37" H x 28" W x 40" L)
125 cm H x 84 cm W x 163 cm L 49" H x 33" W x 64" L	125 cm H x 84 cm W x 163 cm L 49" H x 33" W x 64" L	125 cm H x 84 cm W x 163 cm L 49" H x 33" W x 64" L	(125 cm H x 84 cm W x 163 cm L) / PowrHandler (109 cm H x 74 cm W x 107 cm L) (49" H x 33" W x 64" L) / PowrHandler (43" H x 29" W x 42" L)
Most heavy, low-VOC, waterborne, rubberized and alkyd traffic paints	Most heavy, low-VOC, waterborne, rubberized and alkyd traffic paints	Most heavy, low-VOC, waterborne, rubberized and alkyd traffic paints	Most heavy, low-VOC, waterborne, rubberized and alkyd traffic paints
Heavy continuous use on roads, intersections, parking lots and athletic fields	Heavy continuous use on airport runways, roads, intersections, crosswalks, parking lots and athletic fields	Heavy continuous, high-speed use on airports runways, roads, intersections, crosswalks, parking lots and athletic fields	Heavy continuous, high-speed use on airports runways, roads, intersections, crosswalks, parking lots and athletic fields

Part No.	Description	Line Width
424-826	Bead Dispenser, Speedflo 1-Gun Kit w/Hopper	102 mm – 152 mm (4" – 6")
424-816	Bead Dispenser, Speedflo 2 nd Gun Kit	102 mm – 152 mm (4" – 6")
424-836	Bead Dispenser, Speedflo 2 nd Gun Kit w/Hopper	102 mm – 152 mm (4" – 6")
424-840	Bead Dispenser, Speedflo 1-Gun Kit w/Hopper	305 mm (12")
424-841	Bead Dispenser, Speedflo 2 nd Gun Kit	305 mm (12")